

POLICY PENN5: GREEN INFRASTRUCTURE NETWORK

A. The Neighbourhood Plan designates a Penn Parish Green Infrastructure network, as shown on the Green Infrastructure Network Map, for the purpose of promoting nature recovery and helping mitigate climate change. The network comprises land with known biodiversity value, woodlands, significant hedgerows and lines of trees, water courses and bodies of water

B. Development proposals that lie within or adjoining the network should respond positively to its importance and maintain and, where practicable, improve the functionality of the network, including delivering a net gain to biodiversity, in the design of their layouts and landscaping schemes. Proposals that would unacceptably harm the functionality or connectivity of the network, including the loss of Ancient Woodland, ancient and veteran trees, and ancient wood pasture will not be supported.

C. Development proposals that will lead to an extension of the network including the provision of allotments, and the proper management of Ancient Woodland, ancient and veteran trees, and ancient wood pasture as irreplaceable habitats, will be supported, where they are consistent with development plan policies.'

5.31 Penn Parish is a largely rural area with over 80% of the Parish falling within both Green Belt (GB) and the Chilterns National Landscape. Unlike many other Parishes, Penn has at its heart green space which is surrounded by the 5 settlements that make up the Parish (Knotty Green, Penn, Forty Green, Winchmore Hill and Penn Street). We recognise the importance of the green space in the Parish as an amenity for those in the Parish and in surrounding areas. Whilst there are no large developments planned in the Parish we are aware of a number of large developments nearby that could put additional pressure on our green spaces.

5.32 The GB and Chilterns National Landscape afford considerable planning protections to the green spaces that fall within these areas. We also have several Ancient Woodlands and Recovering Ancient Woodlands in the Parish. These designations afford the areas covered with significant protections within the planning system. In addition, the commons, playgrounds, and many other green spaces in the Parish that fall outside the Green Belt, benefit from designations that also afford significant planning protections. These are shown in Tables 1 & 2.

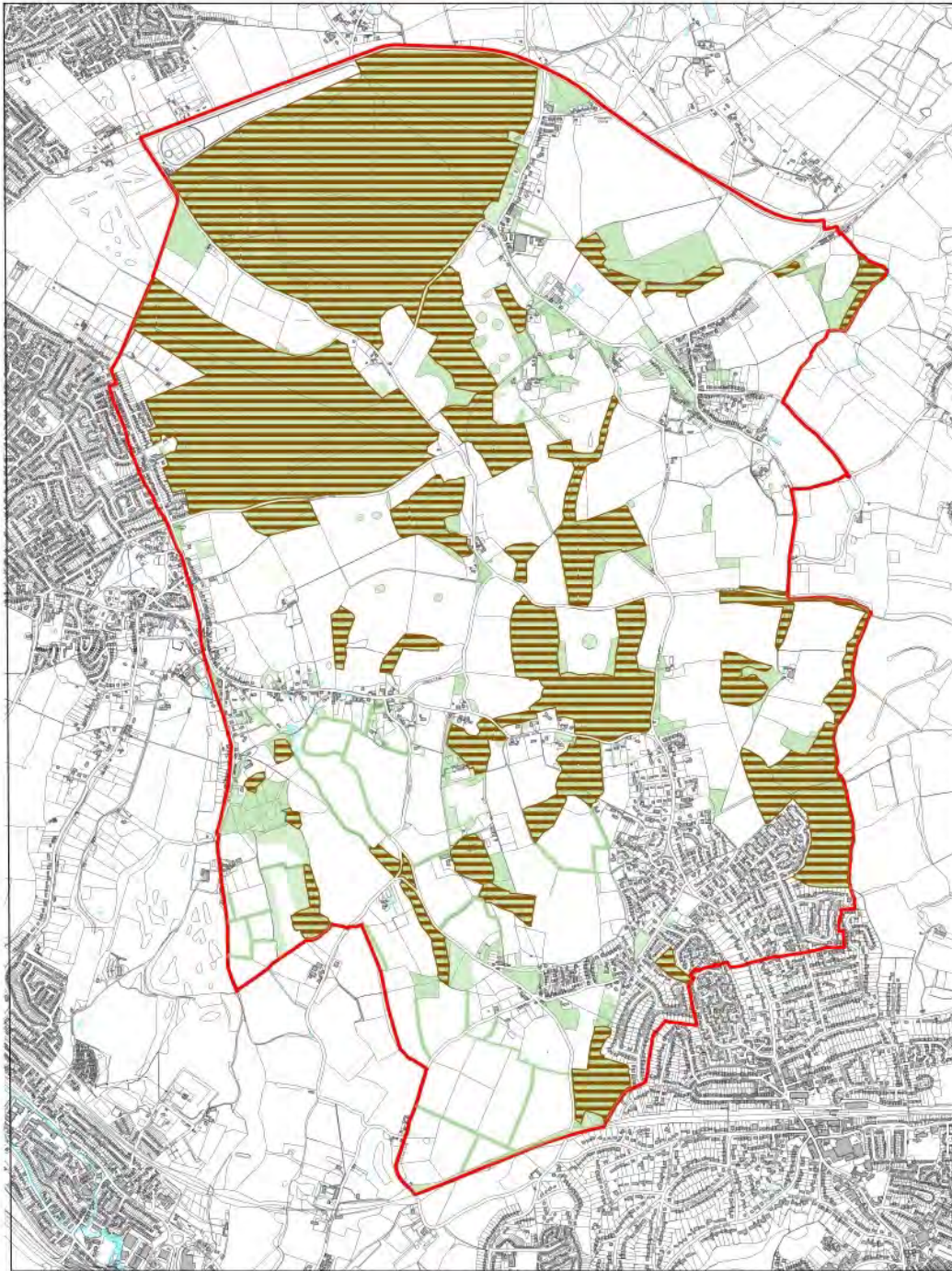
5.33 The policy defines the presence of green and blue infrastructure assets in the Parish, derived from the Natural England Green Infrastructure evidence base ([link](#)) and local knowledge, which have multiple roles including carbon sinking, flood alleviation and

biodiversity net gain). By doing so it supports Core Strategy Policy CS32 'Green Infrastructure' and is in line with saved Local Plan Policies NC1 'Safeguarding of Nature Conservation Interests' and TW6 'Resistance to Loss of Woodland' and Core Strategy Policies CS24 'Biodiversity'. The Policies Map shows the full extent of the Network, which allows applicants to determine if their proposals should take this policy into account.


5.34 The policy requires that all development proposals that lie within the network, or that adjoin it, should consider how they may improve it, or at the very least do not undermine its integrity of connecting spaces and habitats. This may mean that development layouts are designed to contribute to the network's effectiveness.

5.35 Policy PENN5 seeks to provide a local iteration of Section 15 of the NPPF. Its second part comments about the types of development which will and will not be supported. The third part of the policy advises that proposals which extend the identified network will be supported.


5.36 The Policies Map shows those parts of the designated Network that are known or likely to have biodiversity value either as habitat areas; as hedgerows or lines of trees; or as streams and rivers. In calculating biodiversity net gain requirements using DEFRA's latest metric, development proposals located within or adjoining that part of the network should anticipate achieving at least a medium distinctiveness multiplier score.




**Penn Parish Neighbourhood Plan
Green Infrastructure Network**

 Parish boundary



 Existing Green Infrastructure

 Existing Blue Infrastructure

 Ancient Woodland

Plan M: Penn Parish Green Infrastructure Network