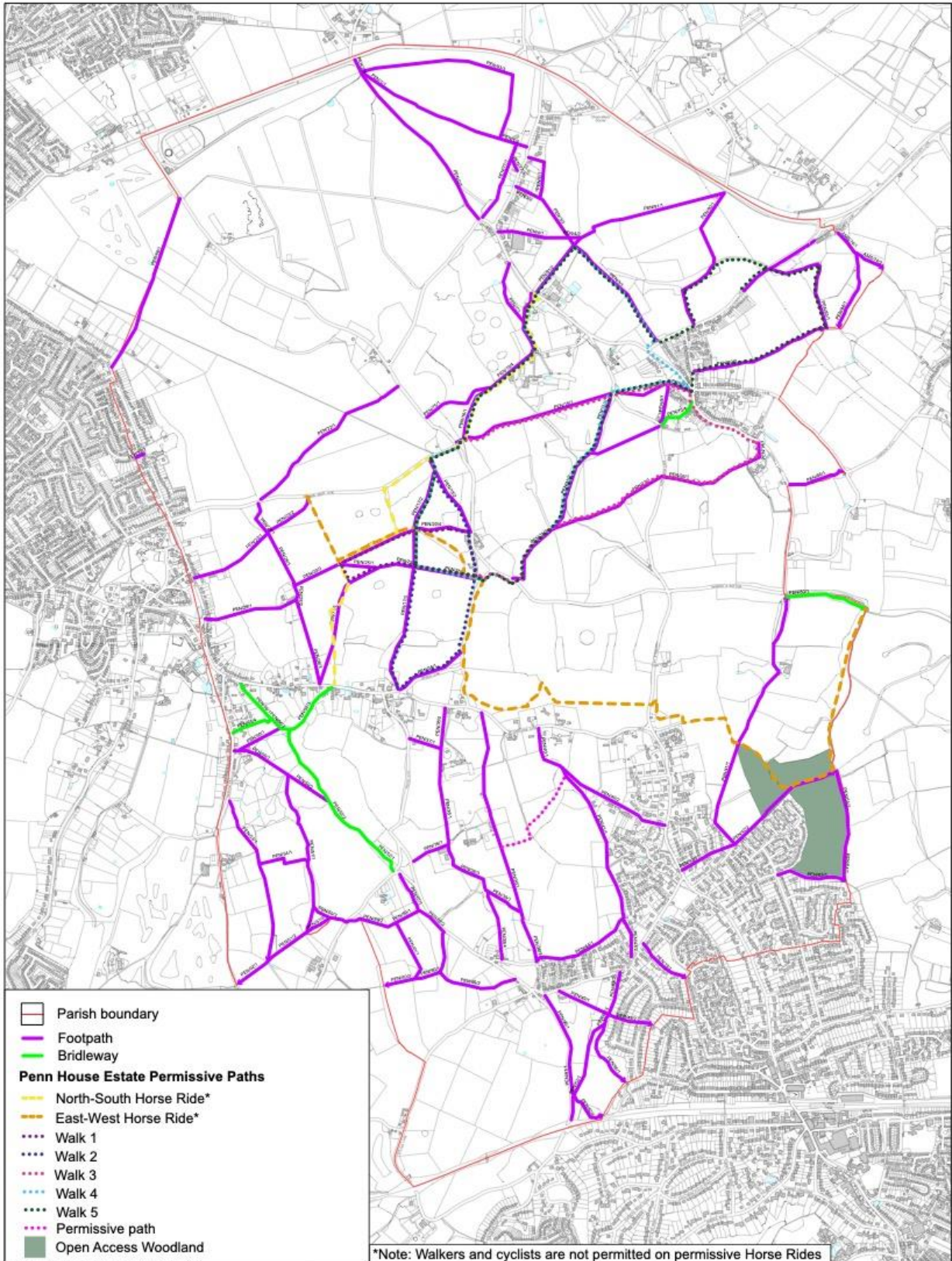


## POLICY PENN9: SUSTAINABLE TRAVEL NETWORK

- A. The neighbourhood plan identifies the existing sustainable travel network, as shown on the Policies Map, for the purpose of supporting healthy and safe active travel opportunities in the parish.***
  
- B. Development proposals should sustain, and where practicable, enhance the functionality of the network by virtue of their layout and means of access and landscape treatment.***
  
- C. Proposals that will harm the functioning or connectivity of the network will not be supported.***

5.44 Identifying the existing sustainable travel network, and where there are opportunities for improvements, will help direct investment to encourage walking, cycling and the use of public transport. The policy maps a network of walking and cycling routes through the parish where many routes continue to connect with neighbouring settlements and with the countryside. The aim is both to raise awareness of the routes to encourage safe and convenient use, and to identify future opportunities to improve their connectivity, in line with the spirit and intention of Core Strategy Policy CP26 'Requirements of new development' on this matter.

5.45 The Policies Map shows the full extent of the Network, which allows applicants to determine if their proposals should take this policy into account. Where proposals include provision for landscaping, new means of access or new layouts, there may be an opportunity to relate the land better to the Network and/or improve the attractiveness of rural routes. At the very least, the policy requires that proposals that undermine the existing value of the Network will be refused permission.



**Penn Parish Neighbourhood Plan**



**Plan R: Penn Parish Sustainable Travel Network**